

NN400

Active-Clamping Pneumatic Underpinner

Eliminates Gaps with Pre-Fire Clamping

LIGHTWEIGHT • EASY SHOP MOBILITY • QUIET OPERATION • EASY TABLE-TILT ADJUSTMENT • MANUAL • COMPACT



NN400
Frame Joining
Capabilities
Single-Level
(Formerly Single-
Level Model VN4MP)

Moulding Width
(min to max)
1/4" to 4 1/2"
(6 to 105mm)

Moulding Height
(min to max)
1/4" to 3 1/4"
(6 to 80mm)

Max Height on
Stroke Length
3/4" for Multi-Level
Machine

Max Distance
Between V-Nails
(Stroke)5
3/4" (145mm)

Pre-set V-Nail
Position Stops
Multiple

V-Nail Sizes
3, 5, 7, 10, 12, 15mm
(SW-HW-HDR)

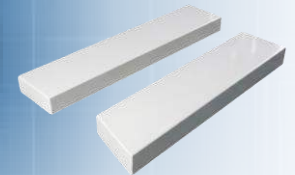
V-Nail
Channel Capacity
220 V-Nails

Multi-Level
moulding showing
V-Nail insertion



Clamping foot

- All clamping pads are easy to disassemble and exchange.
- There are three different gaskets to choose from, depending on the molded bracket, contour, surface treatment or coated clamping feet.
- All clamping pads can automatically press the photo frame without manpower.
- Different colors are available depending on the molded bracket, contour, finish or coating.



Extension Brake Kit

NN400 Active-Clamping Pneumatic Underpinner Eliminates Gaps with Pre-Fire Clamping Technology

The NN400 is the foundational machine for any professional framing workshop. It is a pneumatic underpinner designed to join two mitered frame pieces (45° angles) from the bottom using steel V-nails. Unlike manual tools, the NN300 utilizes consistent pneumatic pressure to drive nails into Hardwood, MDF, and Polystyrene (PS) profiles without splitting the wood. It creates a tightly bonded, invisible joint from the back of the frame.

- Active Clamping Logic: Clamp -> Lock -> Fire sequence ensures zero movement during assembly.
- Dual-Stage Pedal: Allows the operator to check the clamping position before committing to drive the nail, reducing material waste.
- Adjustable Clamping Pressure: Fine-tune the downward force to prevent denting delicate softwood or foam frames.